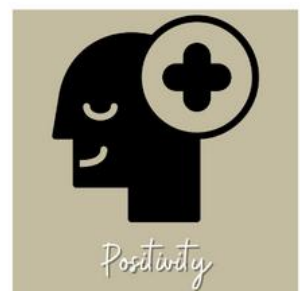




# 1<sup>st</sup> Assembly

## What is OPAL?

09.03.26



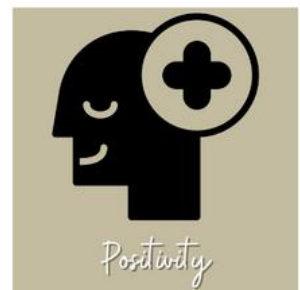
# Our Outdoor Space



We are lucky to have so much space at Wessex...



The field is closed this term...



Positivity



Honesty



Respect



Pride

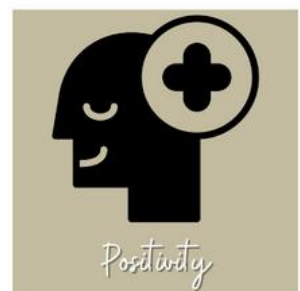
# What is OPAL?



**OPAL is...**

**Outdoor Play And Learning**

We are introducing OPAL at Wessex over the next 18months...



Positivity



Honesty



Respect

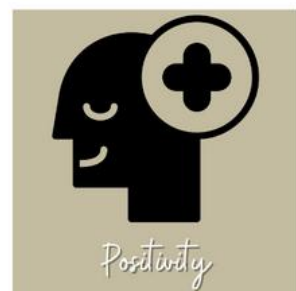


Pride

# Our Outdoor Space



This is how we currently play...



Positivity



Honesty



Respect

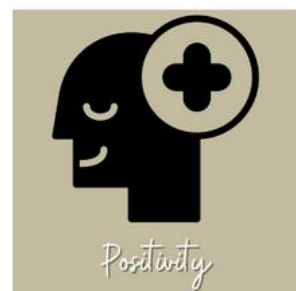


Pride

# Our Outdoor Space



OPAL will change how we play...



Positivity



Honesty



Respect



Pride

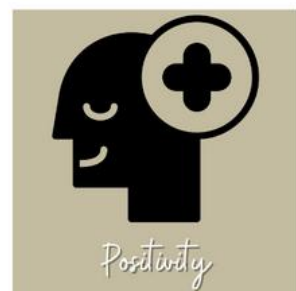
# Our Outdoor Space



OPAL will change how we play...



[Outdoor Play & Learning | OPAL at Knop Law Primary 2023 - YouTube](#)



Positivity



Honesty



Respect



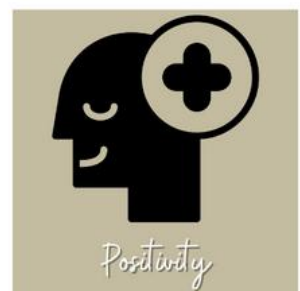
Pride

# What is OPAL?



## OPAL is... Outdoor Play And Learning

We will have regular OPAL whole school assemblies so you can be part of planning your lunch time play!! 😊



Positivity



Honesty



Respect



Pride

# OPAL assemblies



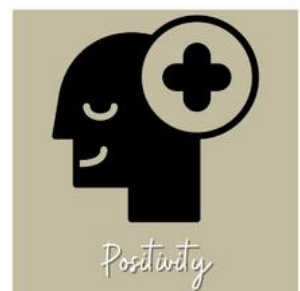
Each assembly will follow the CINI plan:

**C** = Celebrate - what are we doing right/ fun - share photos

**I** = Inform - discuss new ideas/ rules etc

**N** = Negotiate - discuss the risk/ benefit/ safety and outcome

**I** = Innovate - discuss play ideas with children



Positivity



Honesty



Respect



Pride

# Meet the OPAL Team



## Working Group

Wessex Primary School



 Mr Beavan Headteacher	 Mrs Pope Deputy Headteacher Curricular Lead	 Mrs Patrick Teaching Assistant Play Coordinator
 Mr Dalziel Care Taker	 Miss Phillips Governor Play Champion	
 Mrs Adamson Parent Play Champion	 Mrs Strawson Parent Play Champion	 Mrs Moore Parent Play Champion

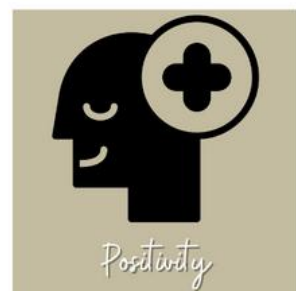


## Play Team

Wessex Primary School



 Miss Louise	 Mrs Price	 Mrs Taylor	 Mrs Brown	 Miss Smith
 Mrs Weaver	 Miss Lewendon	 Mr Randall	 Miss Mahmood	 Miss Rowell
 Mrs Phillips	 Miss Allen	 Mrs Richards	 Mrs Harley	 Mrs Robertson
 Mrs Robinson	 Miss Adams	 Mrs Ford	 Mrs Matthews	

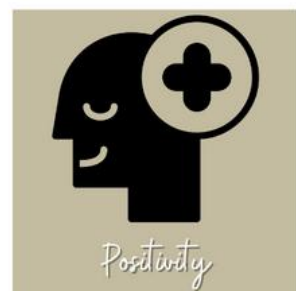



# OPAL LEADERS



## OPAL is... Outdoor Play And Learning

We will be asking for some children to help us  
and apply for an **OPAL PLAY DETECTIVE** role 😊



Positivity



Honesty



Respect



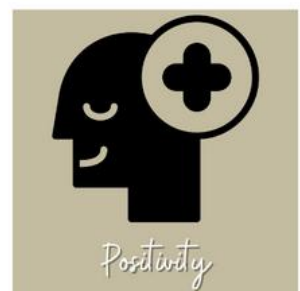
Pride

# OPAL



## OPAL is... Outdoor Play And Learning

Our WESSEX OPAL adventure has started with pupils, parents and staff sharing their thoughts through a survey...



Positivity



Honesty



Respect



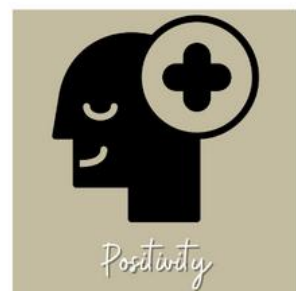
Pride

# Survey results PUPILS



Wessex  
Primary School

## What you like doing...



Positivity



Honesty



Respect

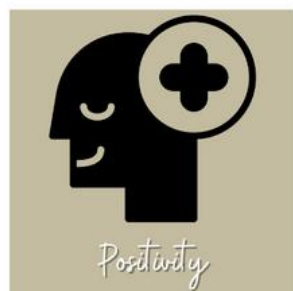


Pride

# Survey results PUPILS



## What you dream of having...



Positivity



Honesty



Respect



Pride

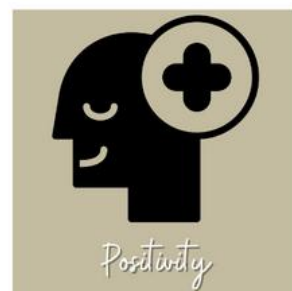
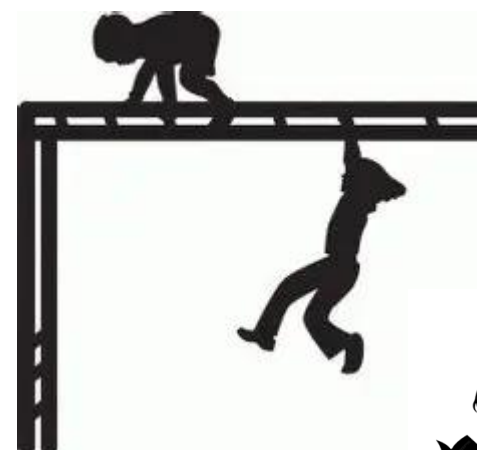
# Survey results PARENTS



## Play is GOOD for



## Need more and Would like to see



Positivity



Honesty



Respect



Pride

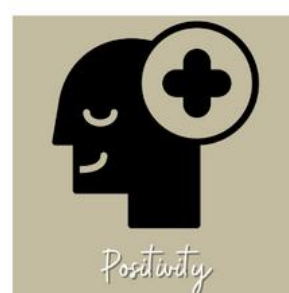
# Survey results STAFF



Play is **IMPORTANT** for



Would like to see



Positivity



Honesty



Respect



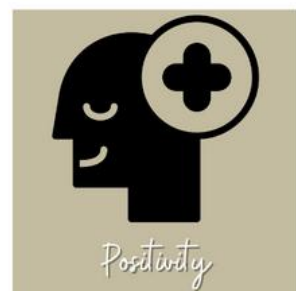
Pride

# Resources



## OPAL is... Outdoor Play And Learning

We will be collecting and buying resources for you to use



Positivity



Honesty



Respect



Pride

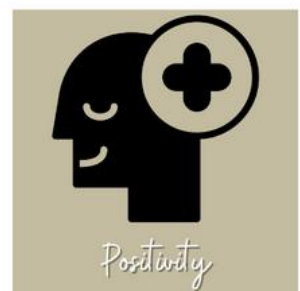
# What next?



## Collect resources

**PLEASE** ask your parents to check the newsletter and school website for what we need and let's all start collecting!!

## We need...



Positivity



Honesty



Respect



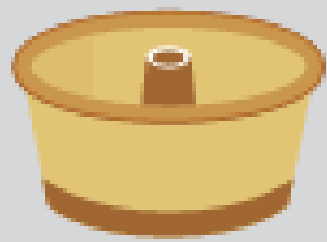
Pride



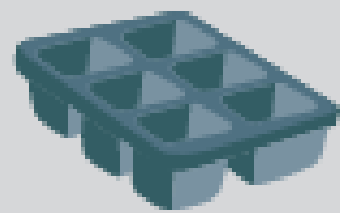
# Upcycled Loose Parts



**Baking Pans**



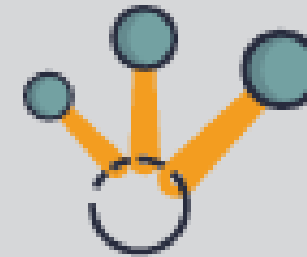
**Cake Moulds**



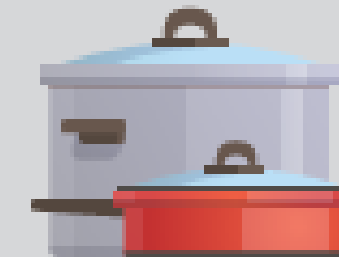
**Ice Cube Trays**



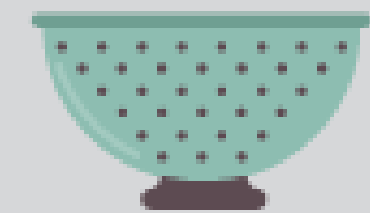
**Kitchen Tools**



**Measuring Spoons**



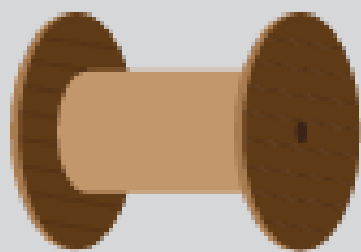
**Pots & Pans**



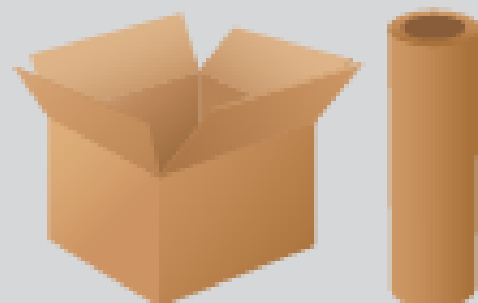
**Strainers**



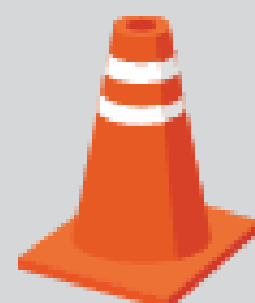
**Baskets**



**Cable Spools**



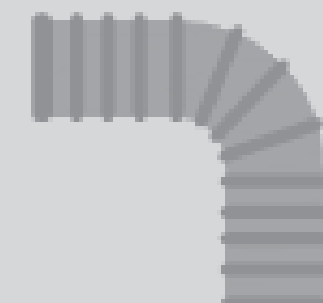
**Cardboard Items**



**Cones**



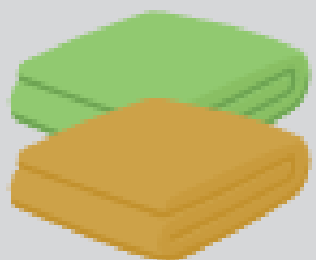
**Containers**



**Corrugated Pipes**



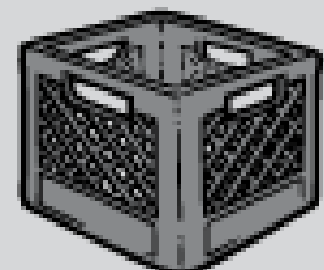
**Dress-Up Items**



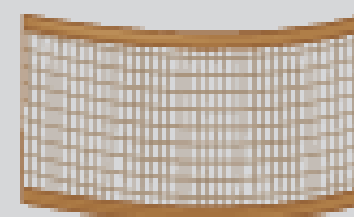
**Fabric**



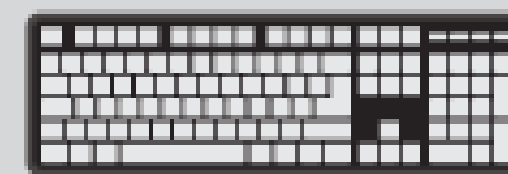
**Funnels**



**Milk Crates**



**Nets**



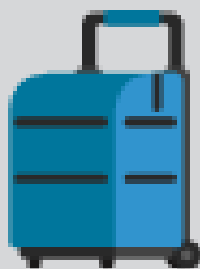
**Old Electronics**



**Pool Noodles**



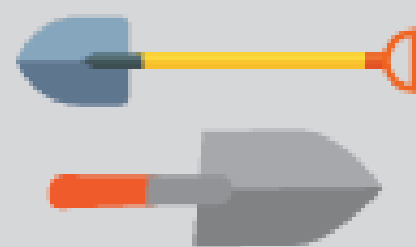
**PVC Pipes**



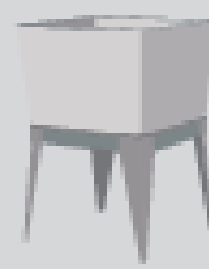
**Rolling Carriers**



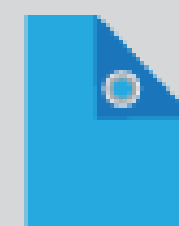
**Ropes**



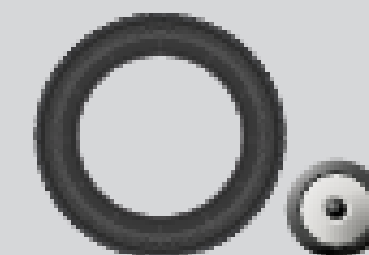
**Shovels & Spades**



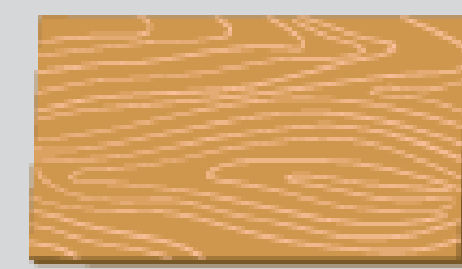
**Sinks & Tubs**



**Tarps**



**Tires & Wheels**



**Wooden Planks**

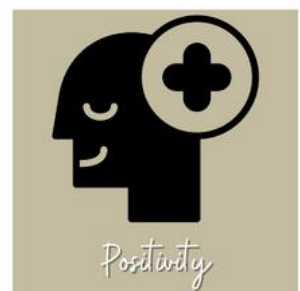
# What next...



## Next term...

We will be changing how we use the outside spaces for all of you at lunchtime by introducing ZONES...

Info in our OPAL assembly the first week back after Easter!! 😊



Positivity



Honesty



Respect



Pride