



**Year 2 loved their trip to Windsor Castle today**

## Dear Parents and Carers



This week, there has been a hush in the school corridors as many pupils have been sitting assessments. The outcomes of these will help teachers with their judgements for end of year assessments and also for end of year reports.

Year 4 pupils have also taken their Multiplication Tables Check this week. Pupils have been working really hard in the run up to ensure that they know as many times tables as possible. The questions they had to answer could have been any multiplication fact and pupils needed to answer within just a few seconds too. We are really proud of everyone in Year 4.

Also completing assessments this week were Year 1 pupils and a few Year 2 pupils who completed their Phonics Check this week. Pupils had to read 40 words - some real and some made up - ensuring that they pronounced each word correctly. Pupils particularly enjoyed their biscuit before taking the check!

Results of the Phonics Check and the Tables Check will be shared alongside your child's school report sent later in the term.

Whilst most yeargroups have been completing assessments, Year 6 have been thoroughly enjoying their rehearsals for their Year 6 production - I'm An 11 Year Old...GET ME OUT OF HERE! The singing coming from the hall has been quite spectacular; and whilst only at the beginning of the rehearsal process, already this has the potential to be a fabulous show!

The trips are also coming thick and fast. Today, Year 2 are at Windsor Castle learning about the monarchy and castles. Year 5 visited Butser Ancient Farm last Friday to support their learning about Vikings. The yeargroup were complimented on their behaviour, attitude to history and their use of good manners. The member of staff leading the sessions from Butser stated our children were the best group he has worked with for years, so much so that they brought him to tears!

Yesterday, Reception children went on their first school trip to Wellington Country Park. The children kept their spirits high and didn't let a little (a lot of) rain stop them! They enjoyed visiting the farm, where they learnt about a range of animals including alpacas, goats and pigs, and even had the chance to feed them, which was great fun. The train ride around the park was a highlight with lots of exciting things spotted hiding in the trees.

After warming up and enjoying lunch, the rain thankfully stopped, allowing the children to explore the woodland, search for fairies and discover dinosaurs rustling in the woods. They were amazed to learn lots of fascinating facts, especially how big a dinosaur egg can be! Throughout the day, the children demonstrated all of the Wessex values, and we were incredibly proud of them all. Thank you to the parent helpers who have attended our trips recently. We really couldn't do these activities without you!

We have seen a huge number of squishies, toys, teddies and other items being brought in to school recently. A reminder please that we do not wish for these items to come in to school because children share them, lend them to friends and sometimes, these get lost or cause disagreements. Please enjoy these items at home but not at school. If your child has a concentration aid as part of their provision plan, this of course is allowed to continue to be brought in.

Don't forget that we have our final Share My Learning session next Thursday for pupils in Years 1 to 6 where we invite parents and carers to pop into class to see your children's work and classroom environment. Arrive at the main entrance for 2:45pm and finish in class by 3:15pm so pupils can pack up and get ready for the end of the day.

Next week will be busy too: Year 5 and 6 are off to Cox Green to take part in a drowning prevention workshop; Mrs Eves and Mrs Phillips will be taking our Hexagon singers to a massed choir concert at The Hexagon in Reading; some Year 6 pupils will return to Cox Green on Tuesday for an extra transition session; class photos will be taken on Friday; and the PTA are running their second Special Person sale on Friday too. Do please make sure that you pay for your child to take part in this via Arbor.

**Mr Beavan**

## Quotes of the week

Year 5 Butser Farm School Trip...

"My favourite part at Butser Farm was the pottery because I was able to make a thumb pot for my mum" Demi, Year 5

"My favourite part at Butser Farm was when we looked into the past looking at Viking artifacts, as we had the opportunity to hold real items from the time and feel the real pelts. The staff were so friendly and funny it was so engaging." Zia, Year 5

"My favourite part of the day was clay making as I got to make a Viking shield. If I could go back there again, I would"  
Jessica, Year 5

"My favourite part of the day was seeing the animals around the farm as it is something I do not get to see them often." Alissa, Year 5

# Diary dates coming up



## Monday 15<sup>th</sup> June

Reception Height & Weight Measurement with the School Nursing Team

KS2 Junior Music Festival at The Hexagon

Y5 & Y6 Drowning Prevention Assembly at Cox Green School

## Thursday 18<sup>th</sup> June

Y1 to Y6 Share My Learning - 2.45pm to 3.15pm

## Friday 19<sup>th</sup> June

Class photographs

PTA Your Special Someone Secret Gift Shop

## Monday 22<sup>nd</sup> to Wednesday 24<sup>th</sup> June

Y5 Bikeability Course

# Good News Certificates



**FS2:** Taymiyah and Henry T

**Year 1:** Ivy-Blue and Dylan

**Year 2:** On a school trip

**Year 3:** Cameron and Sophia

**Year 4:** Chanez and Autumn

**Year 5:** Thomas and Alessia

**Year 6:** Jack TS and Zayena

# Attendance

**Lower School: Cherry**  
class winners with 97.9%

**Upper School: Holly**  
class winners with 96.8%

School attendance this week

94%



Last week = 93.5%  
Last year average = 95%  
Aiming for 97%

# School Values

In assembly this week, we continued our focus on honesty. We discussed how honesty is not just about telling the truth to others, but also about being truthful with ourselves about how we feel. The children reflected on how change can feel different for everyone, whether it lasts for a short time or a long time, and why it is important to be honest about our feelings. We talked about how sharing our worries or emotions with a trusted adult can help us manage change well and feel supported.



# Attendance

We have seen a decline in our attendance over the past term or so. We do look for pupils to have an attendance of 97% or higher over the course of the year. Last year's attendance across the school was 95% - currently for this year we are at 94%.

If a child misses 5 days of school across the entire year, the highest their attendance could be is 97% so whilst 5 days may not sound like a lot, the negative effect quickly builds up. If your child stays off school with a cough, is feeling under the weather or tired and has just one day off every month (10), their maximum attendance can only be 94.2%.

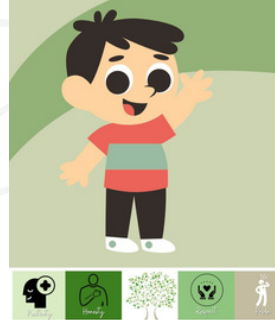
What has the biggest negative impact on learning is where pupils miss one or two days here and there for minor illnesses so please do send your child to school. We will always contact you if they are not well throughout the day.

We understand that holidays are expensive out of term time but do ask that they are taken during the school holidays. ~~Fixed Penalty~~ Notices are issued per parent per child so they can add up quickly, especially if you have taken holiday in term time before.

# Character Curriculum

With children now making greater use of the field, and as our OPAL play develops, this week's character curriculum focus is playing happily on the field. We have been encouraging children to think about how their choices help to make playtimes safe, positive and enjoyable for everyone. This includes using the space well, showing respect for others and taking responsibility for the environment around them. It is a good opportunity to help children build independence, cooperation and thoughtful play habits.

## Playing happily on the field



- Coming back to class quickly at the end of break and lunch
- Respecting other people's games and space
- Respecting equipment
- Finding an adult if there is a need
- Being respectful to neighbours
- Staying safe by ours and neighbour's fences



**Wessex Primary School**

**Your Special Someone**



**Secret Gift Shop**

**Friday 19<sup>th</sup> June**  
**9.30am - 12pm**  
**During School Time**

**£4 Per Child**

Your child will be invited to visit the Secret Gift Shop and pick a lovely surprise for that special someone!

Payment to be made on Arbor  
PTA will assist your child to pick their gift  
So no need for parents to attend!

# BOOK YOUR CHILD'S SUMMER OF FUN

CAMP  
PLACETODAY



Get  
Active

SCAN TO BOOK



WESSEX PRIMARY SCHOOL  
Maidenhead, SL6 3AT

27<sup>th</sup> July - 20<sup>th</sup> August | Monday - Thursday | 8:00am - 3:30pm

[www.getactivesports.com](http://www.getactivesports.com)

01344 860 868

[info@getactivesports.com](mailto:info@getactivesports.com)

Get  
Active

# Parents... Ready To Press Start On Summer?

From the first whistle to the final high-five, our Summer Camps are packed with action, laughter, teamwork, and fun-filled adventures.

## What's Happening At Camp



-  Water Play and Activities
-  Nerf Wars
-  Gladiator Inflatable Battle Zones
-  Crazy Go Karts Racing Arena
-  Pickleball Smash Courts
-  Soft Axe Throwing Challenge & MORE



There will be sport, strategy, teamwork, and plenty of chances to make new friends in a safe, structured space where confidence grows naturally.

Book before **6<sup>th</sup> July** and **20% is automatically applied at checkout**. No codes. No chasing. Just instant savings.

Spaces will fill quickly.  
Lock in their place before this one disappears.

To Book Your Space visit:  
<https://getactivesports.com/active-camps/>



YOUR SCHOOL HAS

# 20 FREE

# CAMP DAY PLACES!

EXCLUSIVELY FOR FAMILIES AT YOUR SCHOOL

USE CODE

## WSX26

AT CHECKOUT

SCAN HERE  
TO BOOK!



HOW TO CLAIM YOUR  
FREE CAMP DAY:



SPORTS



GAMES



ACTIVITIES



NEW FRIENDS



SUMMER FUN



FIRST COME,  
FIRST SERVED!



THE COUNTDOWN TO  
SUMMER IS ON!

Terms & Conditions: Voucher value £34.45 (one full camp day). New bookings only. Must be used at the host school shown on this voucher. Not redeemable for cash or credit and cannot be transferred. Subject to availability and limited to the first 20 bookings using code WSX26. Cannot be used in conjunction with any other offer. Get Active Sports reserves the right to amend or withdraw this promotion.

# DUCK DERBY

RAY MILL ISLAND - MAIDENHEAD  
SUNDAY 14TH JUNE | 12PM - 5PM

FREE ADMISSION  
TRAIN RIDES  
CRAFT STALLS  
CHILDREN'S  
ENTERTAINMENT

+

DUCK RACE  
4.30PM - 1<sup>ST</sup> PRIZE  
**£250**



SHANLY  
FOUNDATION

Maidenhead Lions Club  
Charity number: 1193483

